

PAN 2025 NEWSLETTER

November 2025



C O N T E N T S

A Message from us

Event Highlights

- *Capricorn Asset Management “Sculpting your Legacy in Finance”*
- *Mitchell Gatsi workshops*
- *Lindsay & Colin Oldham workshop*
- *Raku workshops*
- *Shapes of the current exhibition*

Members

- *Reminders & updates*
- *Vacancies*

Provisional Calendar 2026 – save the dates

- *The Story within - Betsie van Rensburg*
- *Art & Magic Enchanted Crafts -
Woermannhaus*
- *Workshops and Events Calendar 2026*

Survey feedback from members

Content provided by: *Svenja Garrard, Karin Retief and Gigi Mathias.*

Layout and design: *Maxine Mathias*

Cover photo- Artist Dawn Adams



Welcome to our second edition of the PAN Newsletter for 2025. This year has already been remarkable, and I remain deeply impressed by the unwavering support and the outstanding Ceramic art showcased during the Shapes of the Current exhibition.

The feedback from the exhibition was overwhelmingly positive, with comments such as “we were completely bowled over by the exceptional creativity and high level of craftsmanship of all ceramicists. It felt like we were in Europe.” These heartfelt responses are a testament to the talent and dedication within our community. Well done to everyone involved.

The highlight of 2025 was securing a 4-year sponsorship agreement with CAPRICORN ASSET MANAGEMENT which will allow us to expand opportunities to grow our artistic community.

As we look to the future, plans for 2026 are already taking shape. Key exciting events include workshops by renowned Ceramists Betsie van Rensburg and Shelley Maisel. See details in this newsletter.

Our goal is to ensure that your annual membership continues to be valuable and that we increase our membership numbers further.

E V E N T H I G H L I G H T S

POTTERY ASSOCIATION OF NAMIBIA & CAPRICORN WEALTH MANAGEMENT

"SCULPTING YOUR LEGACY IN FINANCE."

At the end of April, Capricorn Asset Management invited PAN members to showcase their work at a Capricorn Asset Management seminar titled "*Sculpting Your Legacy in Finance.*" These two events were hosted in Swakopmund and Windhoek, giving a few PAN members an opportunity to sell some of their pieces.

This event led to a four-year exclusive sponsorship agreement between Capricorn Asset Management and PAN for which we are eternally grateful. We appreciate everyone who promptly assisted us on short notice, contributing to the success of this collaboration and resulting in this sponsorship.



MITCHELL GATSI

In June and July, the wonderful Namibian sculpture artist Mitchell Gatsi shared with PAN members the art of sculpturing a hand. Workshops were held in both Windhoek and Swakopmund. Deceptively simple looking (we all have hands) and yet challenging, the participants were able over the course of a day to build an individual hand. For many it was the left as we sculpted with our right. The results were impressive as well as humbling. Capturing the human physique takes patience and much skill. Under Mitchell's enthusiasm and guidance, it was a pleasurable and satisfying day.



LINDSAY AND COLYN OLDHAM

In mid-September, PAN was honoured to host Lindsay and Colyn Oldham from Cape Town who presented workshops in Windhoek and Swakopmund. The workshops were split into a mould making demonstration and the hand building of a candelabra or animal form, decorated with a variety of sprig moulds. Carola Lorck and Ansie Ward kindly offered their respective studios.

Beautiful and detailed candelabras, with many challenging extensions and forms were built. Occasionally the Swakopmund studio was punctuated with cries of dismay as an extension slumped but soon to be fixed with a bit of vinegar and patience. We were amazed at how intricate and stunning candelabras could be constructed just with a few pieces of clay – tubes, rolls and sprigs. Many of the participants at the Windhoek workshop explored the animal theme and amazing creatures with beautiful decorations were created. Colyn's mould making was fascinating, for many a new technique to add to their potting repertoire. His booklet with clear instructions was a wonderful parting gift.



RAKU RAKU RAKU!

Carola Lorck's studio - Die Tonfabrik's RAKU workshop produced impressive results, with gas, fire, and unique glazes creating memorable pieces for participants. Due to the unpredictable nature of RAKU, some Potters left with broken pieces—reminding everyone that clay always has the final word



Our Windhoek Potters followed suit and created some exceptional pieces of Raku at the Jacqui Jansen van Vuuren studio.

Here some results



SHAPES OF THE CURRENT:

Namibia's Potters Making Waves in Swakopmund by LIN

Let's be honest — if the ocean had hands, it would be a potter. Constantly shaping, smoothing, and occasionally destroying everything in sight, only to start again with a new design the next morning. And that, dear reader, is exactly the kind of wild creative energy that Shapes of the Current brought to Kamma Art and Design in Swakopmund.

Potters were asked to interpret the “current” in their own way. Some looked to the Atlantic for inspiration; others found their muse in memory, texture, or emotion.

Presented by the Potters' Association of Namibia (PAN), with support from Capricorn Asset Management, this exhibition is what happens when a bunch of potters get together, use the ocean as inspiration, and showcase exquisite ceramic work — a reminder that Namibia's pottery scene is absolutely thriving.

Life in Namibia.com

highlighting Namibian stories

MEET THE MAKERS OF THE EXHIBITION THROUGH THE EYES OF LIN

Betsie van Rensburg

Once a wheel-thrower, now a sculptor of feelings (and possibly waves), Betsie's pieces seem to move when you look at them. She channels ocean moods like a pottery whisperer — serene one moment, stormy the next. Betsie's clay remembers things — childhood, tide pools, maybe even mermaids.

Carola Lorck

After 25 years with clay, Carola has perfected the art of making earth look elegant. Her work feels like Namibia itself — grounded, golden, and quietly strong. There's something in her glazes that makes you want to touch them. (Please don't. The curator will give you the look.)

Charlene Vorster

Charlene only started in 2020, but you'd think she's been doing this since the dawn of time. Her pieces have that beautiful "first love" energy — the kind that says, "I just discovered clay, and now I can't stop." Expect textures, emotion, and maybe a few late nights spent talking to her kiln.

Cheryl Gibb

Cheryl makes clay look like it's just come out of the ocean — smooth, sandy, and full of secrets. Her colour palette whispers "Namibian coast at golden hour." She's the kind of artist who can make a teapot feel like a beach holiday.

Corlia de Wet

New to Swakopmund and clearly inspired by all this sea air, Corlia's work is bursting with curiosity. Her glazes pop like beach shells, and she's not afraid of a little experimentation (or a lot). Her clay looks happy — and that's saying something

Dawn Adams

Dawn's ceramics have what every potter secretly dreams of: attitude. Her vessels are expressive, emotional, and completely unbothered by perfection. Each one has personality — you half expect them to start gossiping about who got the best kiln spot.

Ebbie Boshoff

Ebbie's work is warm, grounded, and the ceramic equivalent of a hug. Her slip decorations feel like stories told around a fire — honest, humble, and made with love. She reminds us that simple isn't boring; it's soulful.

Fanie Terblanche

Fanie's the experimentalist — half mad scientist, half clay poet. His textures flirt with chaos, and somehow it all comes out beautifully balanced. If clay had a personality type, his would definitely be "adventurous with a touch of mischief."

Gigi Mathias

Gigi's work practically hums with ocean energy. You can almost hear seagulls in the glaze. Her ceramics are playful and organic, drawing on natural forms and an intuitive process.

Gary Gray

Known as The Handy Potter, Gary's pieces are what happens when patience meets play. His forms are easy on the eyes and heavy on heart. You can feel his joy in every curve — he's the kind of potter who makes clay feel.

Genie Albrecht

Four decades in, Genie is basically clay royalty. Her tableware is both timeless and touchable — refined without being fussy. She's mastered the "Namibian ocean palette," proving that experience really is the best glaze.

Uschi Bauer

Uschi has clay in her blood — her grandmother worked for the legendary Meissen Porcelain Factory in Germany. Her work is so elegant it could probably attend a gala. She's the embodiment of "classy with a capital C," but with a Namibian twist.

Jacqui Jansen van Vuuren

Jacqui's relationship with clay began with a bag of terracotta — and let's just say it's been a long-term romance ever since. Her work has that storyteller's depth; every curve and crackle feels intentional. Clay therapy — but make it art.

Jantje Daun

Decades of experience, a calm energy, and impeccable form — Jantje's pieces are like yoga in ceramic form. Balanced, poised, and occasionally so perfect you start questioning your own wheel skills.

Kelly Powell

Kelly's work is basically Swakopmund in clay form — breezy, beachy, and beautiful. She captures the feel of the Atlantic, the hush of low tide, and the sparkle of sunlight on wet sand. Her pots practically smell like sea air.

Kerstin Risbjerg Brehm

Danish precision meets Namibian soul. Kerstin's pieces are calm, minimalist, and quietly profound. She's the kind of artist who could make a lump of clay look like a meditation session. Her work is whisper-soft — but unforgettable

Lesley Crawford

Lesley has been at it since 1967, which officially makes her a pottery legend. Her vessels carry history — of Africa, of art, of a lifetime spent coaxing beauty from earth.

Lindsay Oldham

Lindsay's pieces are elegant. She's a potter who clearly listens to her clay — and it listens back.

Marlene Keding

Sixteen and already showing up in exhibitions — talk about talent! Marlene represents the future of Namibian ceramics, and if her early work is any sign, that future is looking pretty fabulous. Keep an eye on this one — she's going places (possibly with clay all over her hands).

Michelle Brink

A biologist turned potter — because why not mix science with mud? Michelle's work explores the natural world in the most delightful way, proving that the line between lab and studio is thinner than a porcelain rim.

Rafia Afsar

Born in India and shaped by five years in Namibia, Rafia's work is a meditation on belonging. Her pieces look like they've travelled oceans and found peace in clay. If pots could talk, hers would recite poetry.

Rolf Albrecht

Rolf has been shaping the Namibian ceramics landscape for decades — literally. His sculptures feel alive, like the earth remembering its own creation story. He's one of those artists whose fingerprints feel like part of the design.

Steffi Quamby

Steffi manages to run a company and still find time to make art — talk about balance! Her pieces are colourful, precise, and bursting with creative confidence. Clearly, clay therapy works.

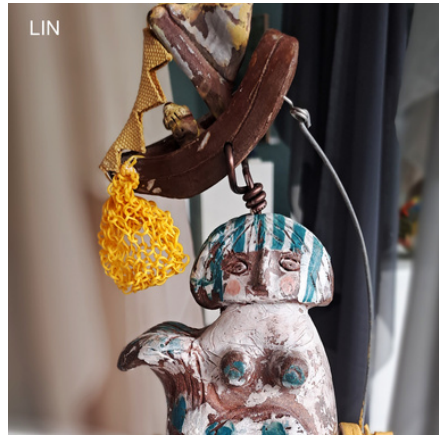
Svenja Jane Garrard

Svenja brings her environmental design roots to the studio, and it shows. Her ceramics feel sustainable, thoughtful, and beautifully made. She's proof that good design and good conscience can share a kiln.

E V E N T H I G H L I G H T S

PAN SURFING THE WAVE

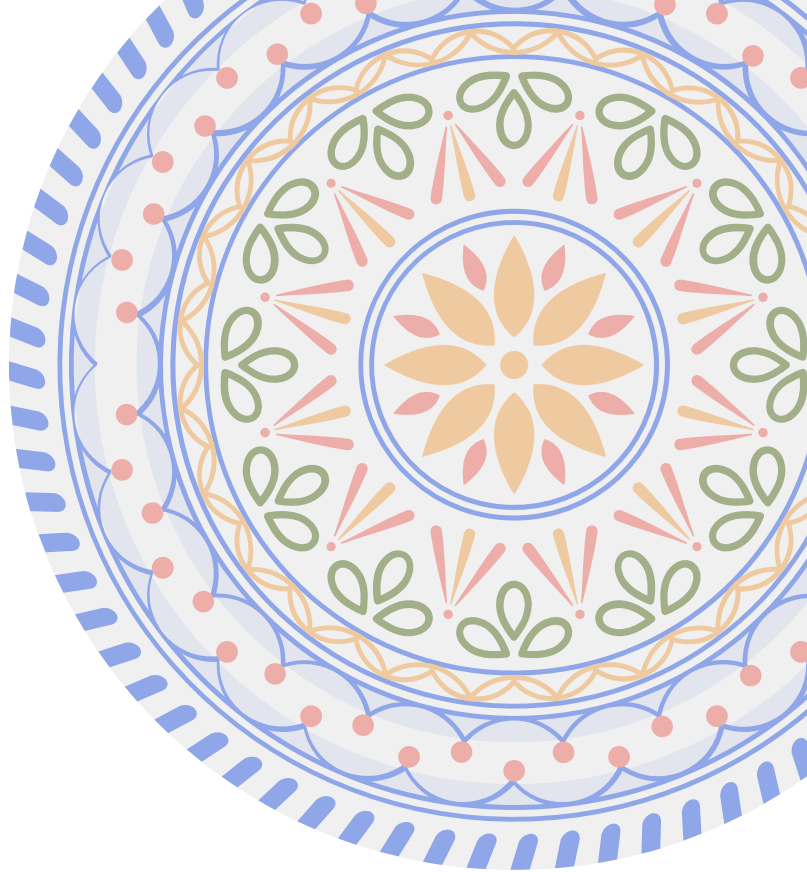




D i d y o u
k n o w ?

The Ceramic School app puts a ceramic community in your pocket. Potters can connect, create profiles, join groups, access workshops, find events, locate studios, and track their work with notes and photos.

<https://ceramic.school/>



W E N E E D Y O U

The PAN team is looking for extra hands

- Treasurer
- Workshop and Exhibition

co-ordinators for both Windhoek and Swakopmund. 2026 is the Biennale and we would appreciate in forming a small Biennale team.





The Story Beneath the Surface — A Collage Workshop for the Biennale



Windhoek

13th of February

Swakopmund

20th of February

Time:

09:00 – 16:00

Facilitator:

Betsie van Rensburg

Purpose:

To help potters discover their personal story or theme for the upcoming Biennale through intuitive collage-making and reflective dialogue

What to bring:

- Some old magazines (5-6 will do the thing) with colourful pictures. Start collecting magazines now if you are not a magazine buyer anymore.
- A board canvas must be A3 size. Cheap ones at Crazy Store or PNA.
- Glue (not stick glue – not strong enough)
- Colour pens, oil pastels, any mark-making stuff. No paints for this session.
- Let's make space for the stories waiting to be told through our hands.



Every piece of clay we shape carries a story – sometimes visible, sometimes hidden beneath the surface.

In preparation for our upcoming Biennale, we invite you to a one-day creative workshop where you will discover your own unique theme – not by thinking about what to make, but by listening to what wants to be made through you.

Through intuitive collage-making, gentle reflection, and guided conversation, you'll uncover symbols, feelings, and ideas that can guide your next artwork. This is a day to play, explore, and reconnect with the deeper current of your creativity.



Art & Magic

Enchanted Crafts

Opening
29 November 2025
at 5pm
Woermannhaus Gallery
until 11 Jan 2026

Art exhibition

Pottery

Exquisite gifts

Quality

Decor

Opening Times: Monday–Friday 10am–12pm, 3pm–5pm | Saturday & Sunday: 10am–12pm

2026 PROVISIONAL CALENDAR

D A T E S T O L O O K F O R W A R D T O

WORKSHOPS & EVENTS.

January	February 12.02.26 (Whk) 20.02.26 (Swk) The Story Within workshop	March 12.03.26 PAN Annual General Meeting
April	May	June TBC PAN Potters Market Project Room WHK
July	August	September 11.09.26 PAN Biennale 2026 Workshops with Shelley Maisel Ceramics
October	November 28-29.11.26 PAN Potters Market in Swakopmund	December TBC Nights of the Galleries exhibition



KERAMOS POTTERY STUDIO is back!

:
After a long sabbatical, Sharon is thrilled to announce that Keramos Pottery Studio in Swakopmund will be re-opening for pottery classes in February 2026.

A past chairlady of PAN, who joined as a member soon after its inception in 1987 and has been teaching pottery since 1988! Looking forward to many more happy years of inspiring others to becoming creative clay addicts.

Welcome Back Sharon!



Pottery supplier & Studio in Swakopmund

We carry a variety of clays from Reinders and Glazecor. Our selection includes pottery tools, as well as decorating slips and glazes. Special products can be ordered upon request. We provide both weekly and one-time classes. Additionally, we host engaging workshops.



Contact us:

081 298 7274

lorckc@elinknam.com

www.dietonfabrik.com



FFoolllloww u uss o



die.tonfabrik/carola.lorck



facebook.com/carola.lorck



Find us:

30 Einstein St

Swakopmund



SURVEY FEEDBACK

Thank you to all community members who participated in the survey. Changes require communication, action, and collaboration, which depend on collective involvement.

Suggestions raised by members to be addressed by PAN:

Q: question

A: answer

Q: Kiln sharing to meet the needs of small-scale potters.

A: The website and WhatsApp group can facilitate information sharing on available space in kilns; participation from potters is encouraged.

Q: Increasing social events for potters and community building.

A: Suggestions for social events are welcome to inform future planning by PAN. We encourage members to arrange events like wine and pottery evenings, Youtube video gatherings; discussions on specific techniques etc. The suggestion is for members to take the initiative to reach out to other potters in their towns and use the PAN WhatsApp group to encourage others to attend.

Q: Offering regular pottery workshops in different regions.

A: PAN would love to extend workshops to other regions. Potters or studios interested in hosting workshops are invited to express interest so feasibility can be assessed.

Q: Expanding access to ceramic education resources.

A: Online platforms and the WhatsApp group currently serve as educational resources. If members would like additional resources, we encourage them to come forward with ideas.

Q: Improving affordable access to materials and firing services.

A: Some studios offer basic materials; studios are encouraged to confirm their services for listing on the website.

Q: Advocating for more public ceramic art commissions for Namibian artists.

A: PAN shares requests received via email and aims to increase awareness of pottery and the number of events for artists to display their work. PAN encourages artists to participate in these events to increase their exposure and opportunities to receive commissions.

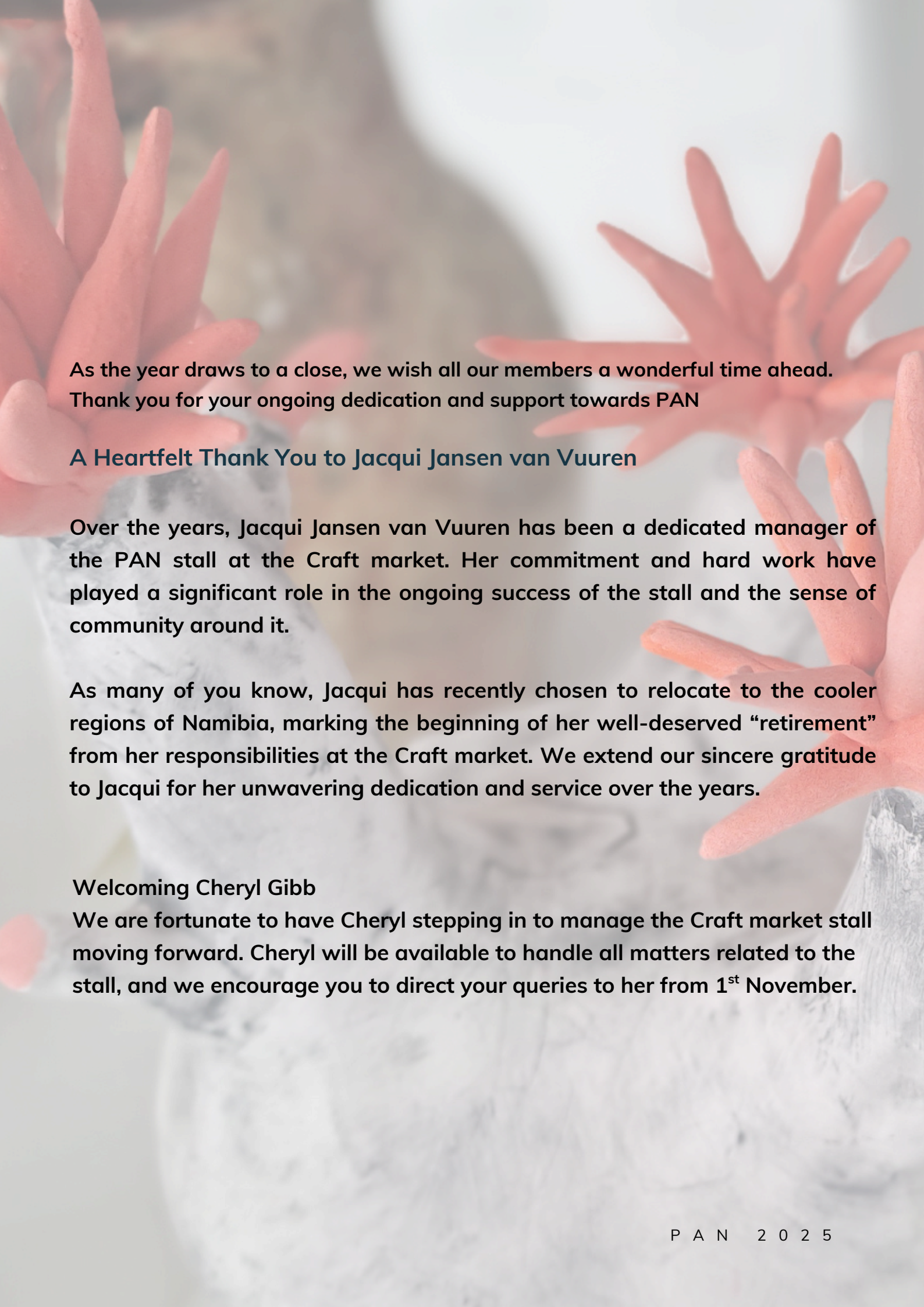
Q: Developing additional methods for resource sharing.

A: Social media platforms are currently used for this purpose. If members would like additional resources, we encourage them to come forward with ideas.

The "bucket list" generated several suggestions, which the PAN committee has noted, with implementation dependent on participants' capacity.

Efforts to acknowledge potters and provide opportunities to learn and grow via workshops and exhibitions are ongoing. Exhibition theme ideas were received and will inform future planning.

There are various opportunities for potters to join markets nationwide. PAN is organizing a national market, aiming for broad participation by November 2026.

The background of the entire page is a soft-focus photograph. It shows several hands of different skin tones reaching upwards, holding a large, white, textured ceramic object, possibly a vase or a piece of art. The lighting is bright and even, creating a warm and communal atmosphere.

**As the year draws to a close, we wish all our members a wonderful time ahead.
Thank you for your ongoing dedication and support towards PAN**

A Heartfelt Thank You to Jacqui Jansen van Vuuren

Over the years, Jacqui Jansen van Vuuren has been a dedicated manager of the PAN stall at the Craft market. Her commitment and hard work have played a significant role in the ongoing success of the stall and the sense of community around it.

As many of you know, Jacqui has recently chosen to relocate to the cooler regions of Namibia, marking the beginning of her well-deserved “retirement” from her responsibilities at the Craft market. We extend our sincere gratitude to Jacqui for her unwavering dedication and service over the years.

Welcoming Cheryl Gibb

We are fortunate to have Cheryl stepping in to manage the Craft market stall moving forward. Cheryl will be available to handle all matters related to the stall, and we encourage you to direct your queries to her from 1st November.



WANT TO
BECOME A PAN
MEMBER?